

HIDS Series Drum Scale Supplemental Manual

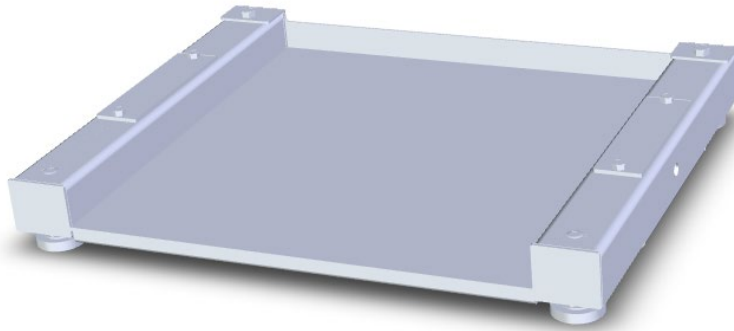
This manual is a supplement to the HIFS floor scale manual and drawings.
Refer to datasheets and drawings for detailed specifications.



1. Physical Differences Between an HIDS Drum Scale and HIFS Floor scale

a. DRUM Scale (Figure 1)

- i. The HIDS drum scale has a lower loading height and side rails. Refer to the drawings for detailed dimensions.
- ii. Figure 1:

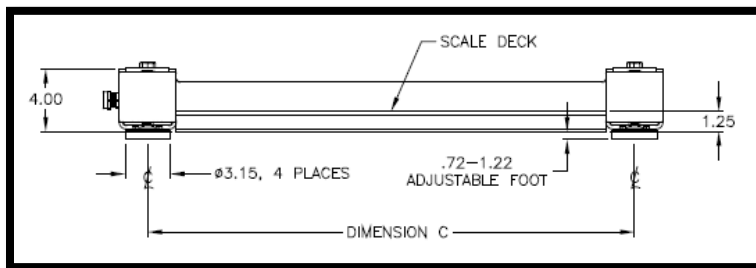
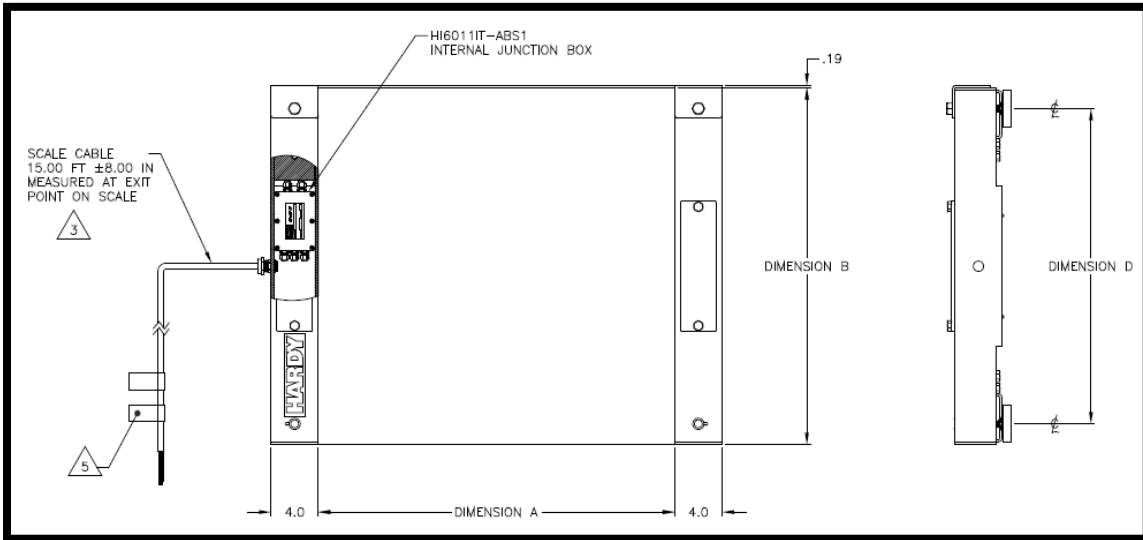


b. FLOOR Scale (Figure 2)

- i. Note the access cutout.
- ii. Figure 2:



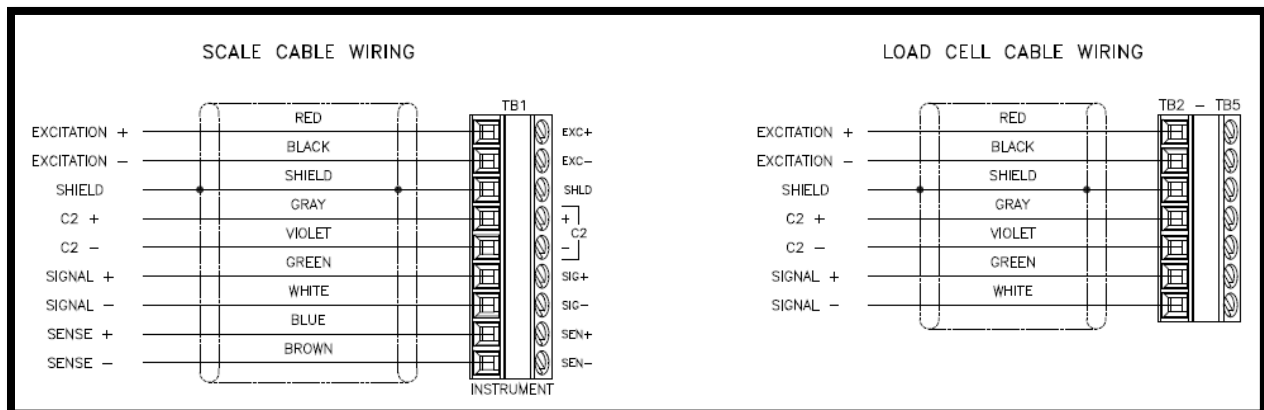
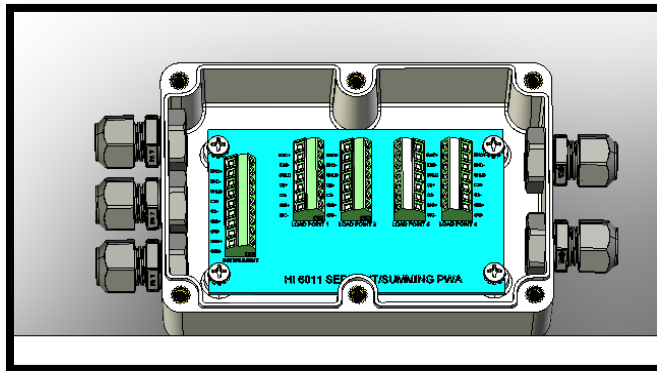
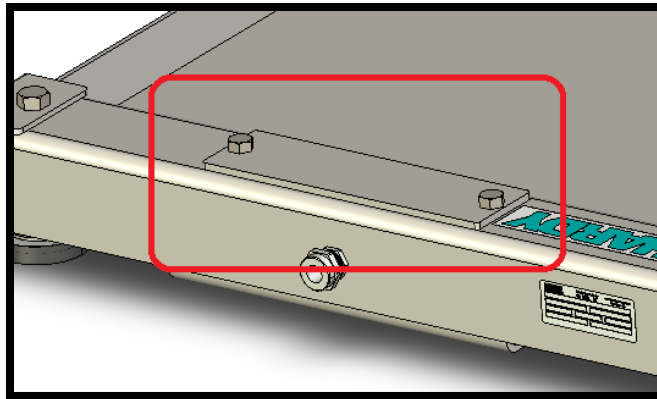
2. Dimensional Examples – Refer to the drawings for detailed dimensions.



MODEL NUMBER	CAPACITY (LBS)	DIMENSION A	DIMENSION B	DIMENSION C	DIMENSION D
HIDS-3030-500LB-PS-S	500	30 IN	30 IN	34 IN	26.5 IN
HIDS-3030-500LB-PS-T	500	30 IN	30 IN	34 IN	26.5 IN
HIDS-3030-500LB-SS-S	500	30 IN	30 IN	34 IN	26.5 IN
HIDS-3030-500LB-SS-T	500	30 IN	30 IN	34 IN	26.5 IN
HIDS-3030-1500LB-PS-S	1500	30 IN	30 IN	34 IN	26.5 IN
HIDS-3030-1500LB-PS-T	1500	30 IN	30 IN	34 IN	26.5 IN
HIDS-3030-1500LB-SS-S	1500	30 IN	30 IN	34 IN	26.5 IN
HIDS-3030-1500LB-SS-T	1500	30 IN	30 IN	34 IN	26.5 IN
HIDS-3030-3000LB-PS-S	3000	30 IN	30 IN	34 IN	26.5 IN
HIDS-3030-3000LB-PS-T	3000	30 IN	30 IN	34 IN	26.5 IN
HIDS-3030-3000LB-SS-S	3000	30 IN	30 IN	34 IN	26.5 IN
HIDS-3030-3000LB-SS-T	3000	30 IN	30 IN	34 IN	26.5 IN
HIDS-3636-500LB-PS-S	500	36 IN	36 IN	40 IN	32.5 IN
HIDS-3636-500LB-PS-T	500	36 IN	36 IN	40 IN	32.5 IN
HIDS-3636-500LB-SS-S	500	36 IN	36 IN	40 IN	32.5 IN
HIDS-3636-500LB-SS-T	500	36 IN	36 IN	40 IN	32.5 IN
HIDS-3636-1500LB-PS-S	1500	36 IN	36 IN	40 IN	32.5 IN
HIDS-3636-1500LB-PS-T	1500	36 IN	36 IN	40 IN	32.5 IN
HIDS-3636-1500LB-SS-S	1500	36 IN	36 IN	40 IN	32.5 IN
HIDS-3636-1500LB-SS-T	1500	36 IN	36 IN	40 IN	32.5 IN
HIDS-3636-3000LB-PS-S	3000	36 IN	36 IN	40 IN	32.5 IN
HIDS-3636-3000LB-PS-T	3000	36 IN	36 IN	40 IN	32.5 IN
HIDS-3636-3000LB-SS-S	3000	36 IN	36 IN	40 IN	32.5 IN
HIDS-3636-3000LB-SS-T	3000	36 IN	36 IN	40 IN	32.5 IN

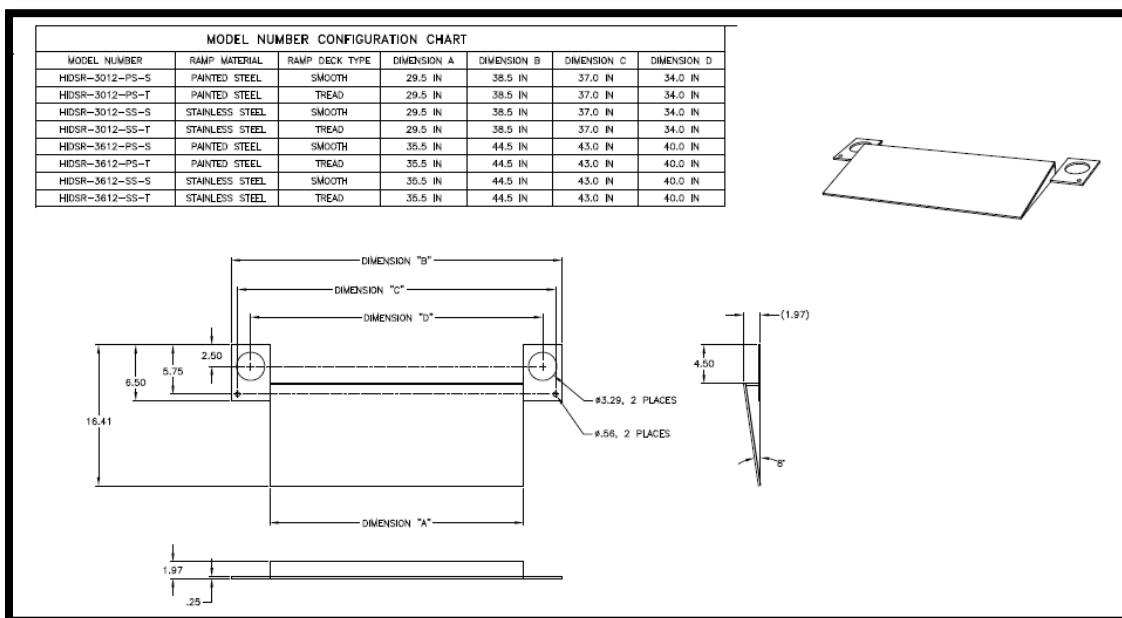
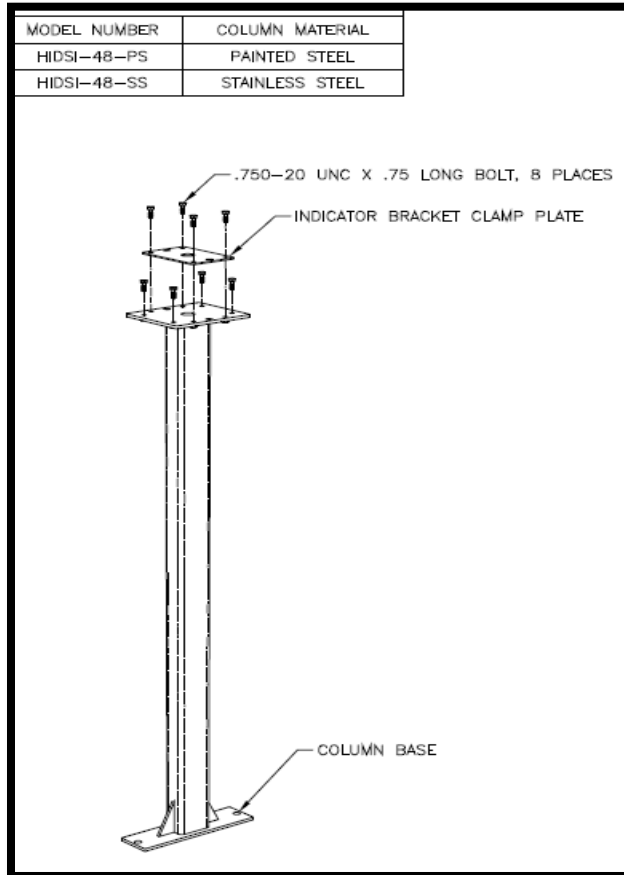
3. Internal Summing Card and Load Cell Cable Wiring

- a. The connections for the load cells and summing card are located under the side cover fastened by two fasteners.
- b. The summing card has 1 large connector for the home run cable and 4 load cell connection points.



4. Columns and Ramps

- a. Columns are fastened to the scale with QTY 2 - 3/4" fasteners.
- b. Ramps can be optionally secured to the ground by QTY 2 - 1/2" fasteners.



5. Load Cell Foot Adjustment And Leveling

- a. Remove the corner caps.
- b. Using a flathead screwdriver, turn the threaded feet to adjust the scale body within 0.5 deg of level for best results.
- c. Refer to the datasheets for accuracy specifications.

